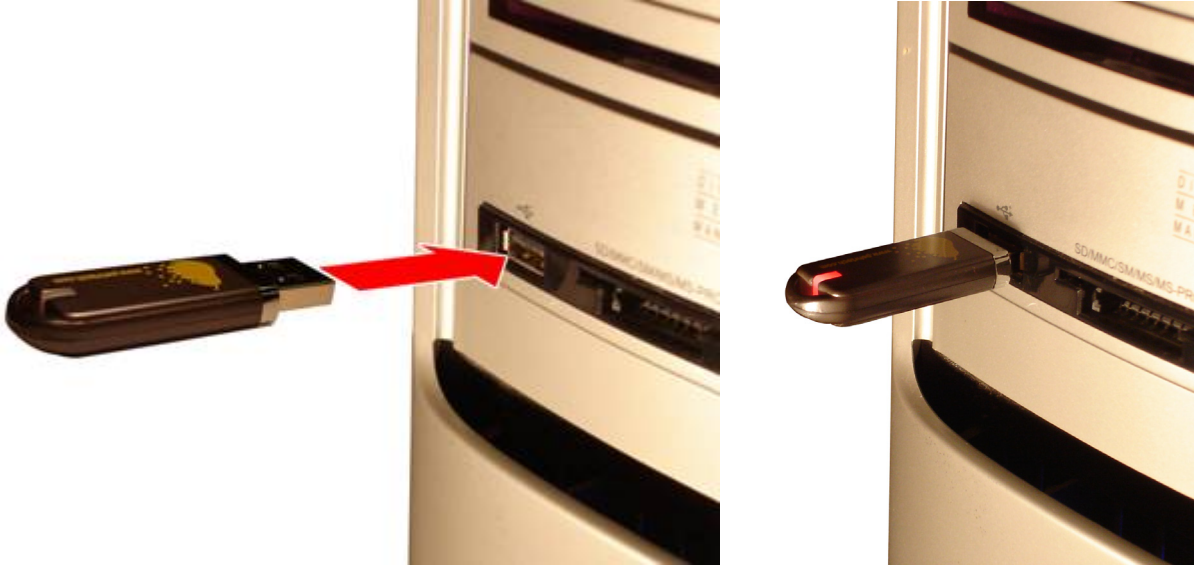


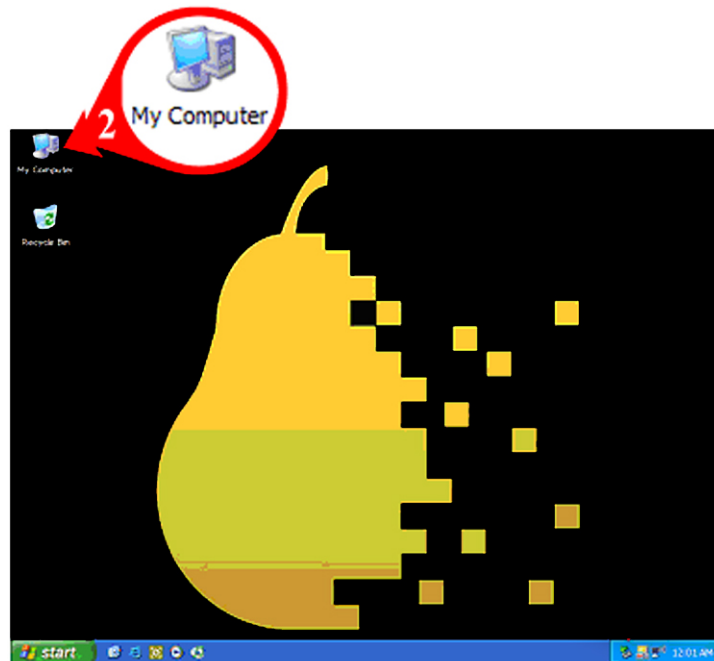
Quick-Start Guide

The Bartlett®

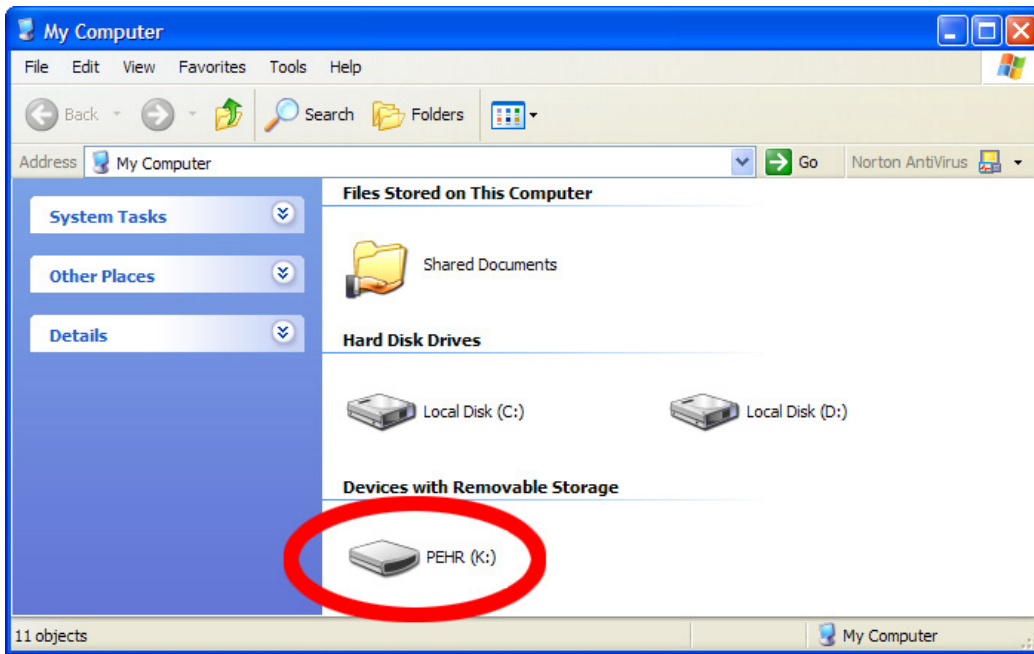
1. Un-cap your Bartlett
2. Plug it into a free USB port on your PC computer (not a Mac)



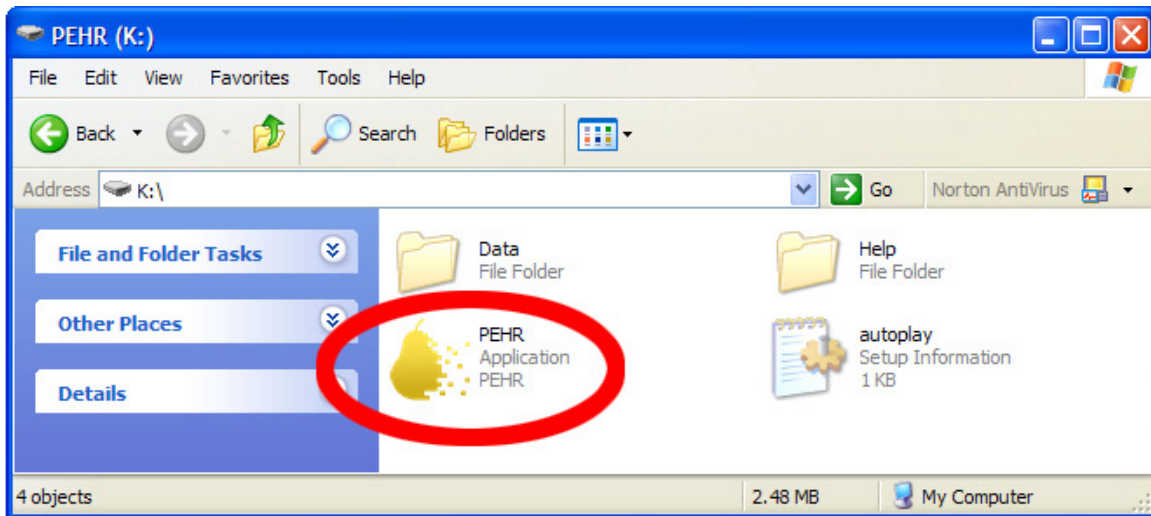
3. The USB drive will automatically install.
4. If a window appears with the PEHR program icon and folders such as Data and Help, skip to step 7.
5. Otherwise, double-click on My Computer (Arrow 2).



6. In the window that appears, double-click on the **PEHR drive icon**.



7. In this final window, double-click on the **PEHR program icon**. Note that it takes a few seconds for the program to start.



If you need additional help, check out the Frequently Asked Questions section:
www.perhtech.com/faqs.html

When using the program, the HELP button at the top of the screen has lots of useful information.